

Magnetic Polishers

Magnetic Finishing is the most efficient way to burnish and brighten the hard to get at parts of jewellery pieces such as undercuts, recesses, slots, tops of bezels and between claws where normal machine finishing is not effective. The stainless steel pins are only 0.5mm in diameter and 4 to 6mm in length, enabling them to work in these small areas. Magnetic Finishing is faster and quiet by comparison to many other forms of finishing with the cycle taking only 30 minutes. It should be noted that on large, smooth or flat surfaces the finish may appear frosted and for this reason, magnetic finishing should always be the first step in mass finishing.

Otec Eco Maxi Magnetic Ref: 34-470-000

When innovation, reliability and quality in mass finishing are key factors, Otec is recognised as the leader.

The Eco Maxi Magnetic has the capacity to process 300g of work in each 30minute cycle. Simple controls allow you to customise the finishing by adjusting the rotation speed and time.

The stainless steel pins supplied with the unit have specially rounded ends to burnish as they strike the work. (Many other brands use cut wire with sharp ends that scratch the surface) Use only 160g of pins in the Eco Maxi Magnetic.

SC4 Compound is a specially formulated low-foam burnishing compound for magnetic finishing and is supplied in a 1 litre bottle with the machine. Use only 100mL of compound and fill the bowl to 90mm below the top rim.



Magico 3000 Magnetic Ref: 34-450-000

The Magico 3000 offers a large capacity 500g work load in each 30 minute cycle. The bowl capacity is a huge 10 litres giving room enough to ensure all pieces are finished uniformly. 225g of Stainless Steel Pins are also provided with the machine.

Simple digital controls provide you with the ability to customise the finishing time and rotation speed. The Magico 3000 automatically reverses rotation speed every 3 to 5 minutes but provides you with the ability to customise even that parameter with an easy reprogramming feature. As expected a back-lighted main switch shows when power is on.

For safety the emergency stop button immediately halts operation of the machine. To release the emergency stop simply twist the button $\frac{1}{8}$ turn clockwise.

Tank dimensions: 300mm diameter x 160mm high
Motor 0.4 Kw Variable speed 700 - 2000 rpm.
Base dimensions: 360mm x 360mm x 340mm high

Weight 18kg



Media and Compound for Magnetic Finishers

Stainless Steel Pins 75grams Ref: 34-661-000

High quality Stainless Steel Pins 0.5mm in diameter and 4 to 6mm long that feature rounded ends to burnish without scratching. A small percentage of chromium is present in the pins to make them respond to the magnetic field generated in the finishers.

SC4 Burnishing Compound 1Litre Ref: 34-685-004

Mix at the ratio of 22mL SC4 Compound to 1 Litre of water.

Specially formulated low-foam burnishing compound for magnetic finishing

To maintain a high quality of finish on your work, the water-compound mixture should be replaced after 16 to 20 hours of processing or when the solution begins to turn dark. Continuing to use the solution once it begins to darken may result in the shot and your work turning black. It may be necessary to use demineralised water if the quality of water in your area is poor.



OTEC Centrifugal Disc Polishing Equipment - This equipment uses a 3 stage process beginning with wet grinding using plastic media and then dry polishing with coarse then fine walnut shell. A range of Models are available that can process from 10 rings (Eco Mini) to 200 rings (CF 2 x 9) per cycle. Please contact us for further information on this range of products that can virtually eliminate hand polishing of jewellery.

ECO Mini Wet
*From casting to polish
 in half the time*



ECO Mini Dry
*A hand polish from
 a machine*

You get the performance of OTEC technology in a small machine.

Innovative disc finishing machines for grinding and polishing. Save time and achieve a finish that previously was only available from large scale finishing machines.

Eco Mini Wet and Dry can each process 100 grams of jewellery pieces



Ref: 34-755-000

Wet Grind disc finisher. Built-in timer for easy control ~ Optimum work piece and media flow for high processing quality ~ Sophisticated container geometry for gentle work piece handling ~ Re-circulating pump included with reservoir & filtering system to optimize efficiency. ~ Complete with grinding media and SC5 compound.

Dry disc Finisher. Small size – high performance ~ Perfect near mirror finish under 1hr. ~ 220 x 230 x 340mm with 3L container ~ Disc-finishing system with timer for easy control ~ Includes impregnated walnut-shell granules & polishing paste.



Ref: 34-750-000

OTEC Eco – Maxi 3 machines in 1
 Ref: 34-745-000



The innovative OTEC disk finishing process already proven to save time and achieve a superior finish has been further extended with the ECO-Maxi by producing a machine with a modular base and 3 separate twist-lock process containers, for Magnetic Finishing, Wet Grinding and Dry Polishing. A sensor identifies which process is to be used and adjusts the parameters such as speed, direction of rotation and pump operation to suit. When used as a magnetic polisher the direction of rotation is changed every 4 minutes.

Machine Capacity in Weight of Jewellery

Magnetic Polishing	300grams
Wet Polishing	300grams
Dry Polishing	200grams

Eco - Maxi is supplied with 3 bowls with bayonet style fixing to allow easy changeover from dry, to wet, to magnetic processing. The machine has a timer for pre-setting the length of cycle and variable processing speed.

Extra processing containers are available *or* The Eco-Maxi can be ordered in Individual Machines without removable processing containers if your requirements are such that you need to run any of these three processes simultaneously.

OTEC Eco 2 x 9 Ref: 34-740-000



This finisher offers all of the advantages that Otec's leading technology provides for finishing Jewellery without the high cost usually associated with this level of technology. The large 9 litre capacity work containers allow the processing of up to 200 rings in a cycle. The wet processing bowl recycles the grinding compound/water mix draining the "dirty" compound out below the disk and returning "fresh" near the top of the bowl. This ensures full use of the compound, accurate repetition of the grinding process and that the grinding is all carried out by the plastic media and not metal pieces.

Capacity:

Wet side 600g

Dry side 300g

Size:

1020mm Wide

400mm Deep

500mm High.



Recent improvements in design of the Otec Disc Finishers allows the use of the finest grade walnut shell in the Dry Process which will achieve a close to mirror finish. A pre-polish in the dry process container using a larger walnut shell will speed up the finishing time and provide for a better finish especially on larger surface areas. This table top model is designed for processing one batch per week-day. If your requirements are higher see the model CF2 x 9T p121

OTEC CF 2 x 9T

Ref: 34-721-000

This model is the next step up from the Otec Eco 2 x 9. The CF2 x 9T has been engineered with heavy duty components from the bearings and motors through the process containers and including the grinding compound's dosing pump, to work all day every day. While the bowl capacity is limited to around 200 rings per cycle, you can run 2 to 4 cycles per day to boost output to around 4000 rings (more if the size is smaller) per week.




Overall Size:
1170mm Wide
470mm Deep
680mm High
Weight:
80kg 
Power
Consumption:
1.4 KVA

OTEC CF 2 x 9

Ref: 34-720-000

The CF range has been designed for larger manufacturers and features the highest level of engineering to ensure reliability of these finishers. A digital display shows the working hours, processing time and speed while giving you control over the processing.

Other features include: Automatic water-level-regulation Choice of either Manual mixing and dosing of grinding compound/water with a recycling system OR Automatic mixing and dosing with fresh water feed. Also Manual or Automatic screening station to separate the jewellery and media.

Available with 2 or 3 processing containers of 9 Litre or 18 Litre capacity. 



OTEC Media and Compounds

Grinding Media and Compounds

- Ref: 34-680-000 White Pyramids*
- Ref: 34-681-000 White Cones*
- Ref: 34-685-010 SC5 K6 Concentrate

* It is common to mix this media 50/50 for more even results in a shorter time.



Polishing Media and Pastes

- Ref: 34-671-000 P1 Paste (Silver)
- Ref: 34-672-000 P2 Paste (Gold)
- Ref: 34-676-000 P6 Paste (Titanium)
- Ref: 34-688-100 H1/100 Walnut (coarse)
- Ref: 31-688-200 H1/200 Walnut (medium)
- Ref: 34-688-400 H1/400 Walnut (fine)
- Ref: 34-688-500 H1/500 Walnut (extra fine)

OTEC Drag Finishing Machines



This is the final stage of Jewellery Polishing. Jewellery items are placed on racks which are "dragged" through the finest grade of polish enhanced walnut grains to produce a mirror finish on both the inside and outside surfaces of rings, broaches, large earrings etc. The use of racks means items of jewellery will not knock against each other during polishing and allows heavier pieces such as heavy rings and pendants (over 8 grams) as well as bangles to be finished.

The introduction of an optional water cooling jacket around the process container enables the larger models (DF35 & DF70) to run for extended periods without generating too much heat that may otherwise impede the finishing process.

Model	Rings	Length	Width	Height	Weight	
DF12	60	790mm	643mm	983mm	83kg	Ref: 34-731-000
DF35	120	840mm	710mm	920mm	138kg	Ref: 34-730-000
DF70	200	1020mm	930mm	1700mm	230kg	Ref: 34-732-000



Drag Finishing Kit for Eco-Mini & Eco-Maxi





These Drag Finishing attachments are produced for the dry processing bowl of the Eco Mini and Eco Maxi (see page 124). To fit, simply replace the disc retaining screw with the special Stainless Steel post supplied with the kit. Load the workpieces onto the holders and place the Drag Finishing plate onto the top of the Dry processing bowl loaded with the appropriate Walnut Media (H1/500) then turn on the timer. You can now walk away and let Otec finish for you.

Ref: 35-750-500 Drag FinishKit Eco-Mini Ref: 34-745-500 Drag Finish Kit Eco-Maxi

OTEC
PRÄZISIONSFINISH

Tumbling Media - (Mass Finishing)

The mass finishing of articles that have just been cast in gold or silver is usually carried out in a three stage process. Firstly, magnetic finishing to brighten (burnish) those "hard to get at" areas such as under rails inside filigree and wires. Second stage is deburring with an abrasive compound, i.e., plastic/ceramic chips of a pyramid and or cone shape which produces a clean matt (not bright) finish. The final stage is polishing using either steel shot, ceramic cylinders or walnut media (this will vary depending on the type of machinery used).

Magnetic Finishing Media

Stainless Pins 75g Ref: 34-661-000 Stainless Steel 4-6mm x 0.5mm pins with bullet shaped ends.

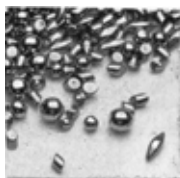
Grinding / Deburring Media

Green Pyramids 1kg Ref: 34-630-000 Green plastic media for light deburring of castings. 6 x 6 x 6 mm pyramid shape will help remove mould lines. Used wet with GRC Cleaning Fluid on all precious metals. Rinse clean regularly for best results.

PX10 Pyramids 1kg Ref: 34-680-000 White plastic 10mm pyramids for fast cut deburring of precious metals. Not recommended for use on gem set jewellery.

KX10 Cones 1kg Ref: 34-881-000 White plastic 10mm cones for fine deburring and smoothing precious metals. It is common to mix 50% PX10 Pyramids and 50% KX10 Cones for more even results in a shorter time.

Steel Shot



Steel shot is used to burnish metal to a mirror bright finish. AJS steel shot consists of a mixture of ellipses, ball cones, pins and diagonals which are uniform in size and shape, non abrasive and carefully tempered for maximum life.

When used in conjunction with our burnishing powder (Rumble Bright Plus) it produces a bright finish, especially useful for polishing charms after soldering, polishing castings, cleaning shop soiled chain, etc.

Medium Steel Shot 1kg Ref: 34-600-000 Diagonals: 5.3 x 3.2mm, Ellipses: 4.8mm, Ball Cones: 6.8 x 5.8mm Pins: 10 x 3.3mm

Fine Steel Shot 1kg Ref: 34-620-000 Diagonals: 5.3 x 3.2mm, Ellipses: 3.2mm, Ball Cones: 4.3 x 3.7mm Pins: 12.7 x 1.7mm

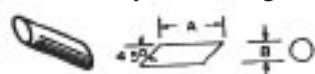
Stainless Steel Shot 1kg Ref: 34-621-000 Diagonals: 5.3 x 3.2mm, Ellipses: 3.2mm, Ball Cones: 4.3 x 3.7mm Pins: 12.7 x 1.7mm

Shot Anti-Rust 250g Ref: 34-655-000 Rust preventative powder for storing steel shot.

For best results clean steel and stainless steel shot regularly. If the water or shot turn black it usually is result of too much burnishing compound and the shot will not polish until the black coating has been removed by cleaning. If the next usage will not be the following day, steel shot should be cleaned, dried thoroughly and stored away from moisture. Please note even Stainless steel shot will rust if left damp (uncovered) for pronounced periods (1 to 2 months).

Ceramic Media

Ceramic Cylinders 1kg Ref: 34-640-000 Diagonal cut cylinders: 10 x 4mm



White ceramic burnishing media is chosen for its size, shape, durability and low care. It is specially prepared with an extremely high polish finish. While providing maximum surface contact, it also cushions finished parts from one another and is able to penetrate into remote areas for maximum finish.

Walnut Media

Walnut/rouge 500g Ref: 34-625-000 Rouge impregnated media, used dry with steel shot for a brilliant polish.

H1/050 Extra Coarse 1kg Ref: 34-688-050 Larger size 1st level polishing will not get caught inside filigree pieces.

H1/100 Coarse 1kg Ref: 34-688-100 Standard 1st level polishing leaves a finish similar to tripoli.

H1/400 Fine 1kg Ref: 34-688-400 Final mirror finish for use after H1/050 or H1/100 for gold or Silver.

H1/500 Extra Fine 1kg Ref: 34-688-500 Final brilliant finish used after H1/050 or H1/100 can be used on gem-set pieces. Ideal for use in Drag Finishing.

Cleaning / Polishing Compounds

SC4 Magnetic Ref: 34-685-004 Low foaming compound specially formulated for use in magnetic finishers

GRC-3 Pink 200mL Ref: 34-641-000 Pink cleaning fluid is used diluted 5mL to 40mL water for 1kg of pyramids

SC5 Concentrate 1L Ref: 34-685-010 Used with PX10 White Pyramids and KX10 White Cones

Rumble Bright 400g Ref: 34-650-000 Concentrate burnishing powder for use with Steel Shot, Stainless Steel Shot or White Ceramic Cylinders. Ingredients include an anti-rust component to protect shot while submersed.

Polish Paste P1 Ref: 34-671-000 Used to recharge H1 Walnut media especially good for polishing Silver

Polish Paste P2 Ref: 34-672-000 Used to recharge H1 Walnut media especially good for polishing Gold

Polish Paste P6 Ref: 34-676-000 Used to recharge H1 Walnut media especially good for polishing Titanium

GY-ROC TUMBLERS

Gy-Roc is just not a tumbler, it is a vibratory honing machine capable of producing finishes unequalled by anything on the market. Unlike many other tumblers, the motor is isolated from the vibrating shaft, so that the motor will have a long life. It is also the only tumbler that can stack another 2 bowls on top.

Very effective for deburring and burnishing metal castings, as well as grinding and polishing stones.

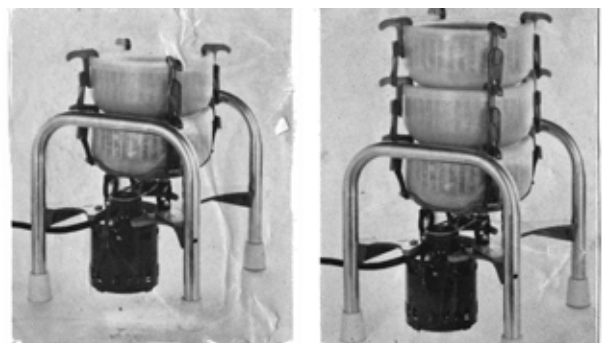


	Model C	Model A	Model B
Ref:	34-515-000	34-510-000	34-500-000
Bowl dia:	355mm	245mm	150mm
Bowl Depth:	155mm	105mm	70mm
Shot Capacity:	18Kg	5Kg	2Kg
Weight:	12Kg	6Kg	3.2Kg
Dimension (LxWxH):	455 x 455 x 370mm	330 x 330 x 305mm	230 x 230 x 230 mm

Features include:

- Specially formulated polyolefin bowl for light weight strength, long life and ease of cleaning
- High strength A.B.S. plastic spider
- Precision life-time ball bearings
- Heavy duty, internal fan cooled motor
- Two speeds, 1500 and 2500 vibrations
- High speed vibration of 100% grinding action
- Low speed vibration for extra gentle finishing
- No 'loafers', no dead spots
- Each tumbler has 2 adjustable counter weights that are used to adjust the amount of vibration in the bowl.

Piggyback Kit Ref: 34-500-005



Model 'B'

The capacity of the model B (the smallest model) can be doubled or tripled by the purchase of a piggyback kit. (See illustration) consisting of bowl, lid and 4 retaining clips. This means gold pieces can be placed in one bowl, silver pieces kept separate in another bowl or plastic pyramids can be used in one bowl, at the time burnishing is taking place in another bowl Please note - Piggyback kits cannot be used on model A or model C.

Counterweights can be adjusted to increase vibratory power.

Double Your Output! Triple Your Output!
Add 1 Piggyback Add 2 Piggybacks

Gy-roc Spare Parts

We hold in stock a wide range of parts for that rare occasion you may need them.

Model B	Model A	Model C
34-500-001 Belt	34-510-001 Belt	34-515-001 Bowl Lid
34-500-002 Bowl Lid	34-510-002 Bowl Lid	34-515-002 Retainer clips
34-500-003 Bowl only	34-510-003 Motor only	34-515-003 Belt
34-500-004 Retainer clips	34-510-004 Retainer clip	34-515-004 Bowl only
34-510-005 Spring with rubbers	34-510-005 Spring with rubbers	34-515-005 Spider assembly
34-500-006 Spider assembly	34-510-006 Main bearing	34-510-005 Springs - bowl base
34-500-007 Motor only	34-510-008 Bowl only	34-515-010 Motor only
34-500-008 Motor assembly frame	34-510-009 Spider assembly	
34-500-015 Spring only (bowl base)	34-510-011 Motor assy. frame	