

Durston Rolling Mills are known throughout the world as being of the highest quality and having strong, robust design and appearance. They are used by craftsmen in a wide variety of uses including wire shaping and flattening, material marking and patterning, wherever there is a need to roll down metal. They are suitable for both quality and quantity productions.

Modern manufacturing methods together with the use of highest quality materials and specific analysis for the alloy roll steel provides for highly accurate machines and long life with minimal maintenance. All machines have extension rolls as standard which are easily interchangeable with other patterns or D shapes which may be required. Phosphor bronze oilite bearings are self lubricating and completely maintenance free. The rolls are of the highest quality Swedish roll steel specially heat treated to Rockwell C scale 67/64 for maximum hardness. Full service and operating instructions are supplied with each model with all machines being CE marked.



ALL MILLS ARE FULLY GUARANTEED



Durston Micro and Mini Mills

These three Mills are Durston's most economical mills combining low price with a great degree of versatility for producing strip and wire at the lowest possible cost. The very fine adjustment on the roll gap allows greatest possible control over reductions made in each pass together with ease of turning.

The smallest, lightest mill with a big output - widely used as the first and only machine or often as a back-up to larger mills. Extension rolls are fitted as standard.

MiniMill Stand

Ref: 16-427-001

Very sturdy stand for Durston Micro and Mini Mills. This stand positions the mill at an excellent height for working. Four holes in base to secure to floor.

Weight: 9kg

Size: 310 x 310 x 920mm

Finished in attractive hammer finish metallic silver/grey. Weight 9Kg



Micro Mill

Ref: 16-424-000

Roll Size 70mm x 35mm

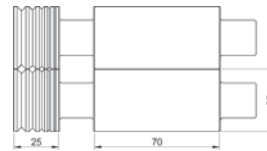
Sheet Capacity 4mm x 70mm

Gear Ratio Direct Drive

Wire Capacity 5, 4, 3, 2 & 1mm V Grooves on Extension Rolls

Dimensions 220mm wide x 140mm deep x 210mm High (without handle)

Weight 12kg



Mini Mill C80

Ref: 16-426-000

Roll Size: 83 x 45mm

Sheet Thickness: 4.5mm

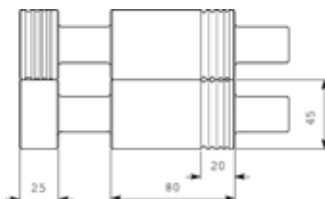
Width of Sheet: 58mm

Wire Capacity: 4.5 - 1mm

No. of Wire Grooves: 4

Gear Ratio: Direct Drive

Extension Rollers 3 'D' Grooves 3.5, 2.75, 2.25mm



Mini Mill C100

Ref: 16-427-000

Roll Size: 105 x 45mm

Sheet Thickness: 5mm

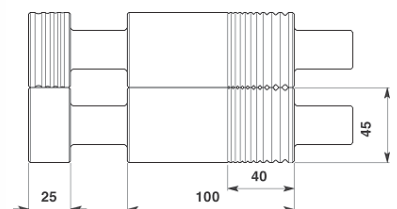
Width of Sheet: 78mm

Wire Capacity: 6.0 - 1mm

Wire Grooves: 10

Gear Ratio: Direct Drive

Extension Rollers 4 'D' Grooves 4, 3, 2.5, & 2mm

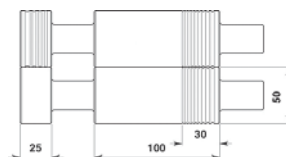


Durston 100 Rolling Mills (DRM 100)

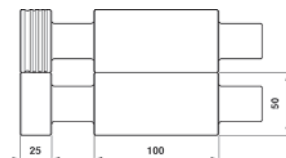
The new DRM 100 incorporates a totally new casting giving maximum strength and rigidity with the highest quality hardened and ground rolls. Features include; Safety covers over the adjusting gears, Self lubricating maintenance free bearings and hardened helical drive gears with special form for maximum drive. Also included is Durston's new highly efficient gear box with a reduction of 4 - 1.



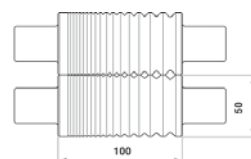
DRM C100
Combination Sheet and Wire with Extension Rolls



DRM F100
Flat Sheet with Extension Rolls



DRM W100
All Wire
no Extension rolls
no reduction gears



Specifications

	DRM C100	DRM F100	DRM W100
Reference No.	16-440-000	16-442-000	16-441-000
Roll Size	100mm x 50mm	100mm x 50mm	100mm x 50mm
Sheet Capacity (thickness)	5mm	5mm	-
Width of Flat	70mm	100mm	-
Wire Capacity	7mm - 1mm	-	10mm - 1mm
No. of Wire Grooves	9	-	17
Gear Ratio	4 : 1	4 : 1	Direct Drive*
Extension Rolls	4 'D' Grooves 4, 3, 2 & 1.5mm	4 'D' Grooves 4, 3, 2 & 1.5mm	None*
Dimensions in mm	350 x 200 x 350 (Without Handle)	350 x 200 x 350 (Without Handle)	260 x 200 x 350 (Without Handle)
Net Weight	32kg	32kg	26kg

Pedestal Stand
Ref: 16-440-001



Suits all
DRM 100
DRM 130 and
DRM150 Mills
Width: 300mm
Depth: 350mm
Height: 920mm
Weight: 10kg

* Note: DRM W100 - All Wire Rolling Mill has no reduction gear and no extension rolls.

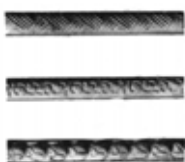
Both the Combination (C100) and All Sheet (F100) are also available in an economy version without reduction gear and without extension rolls by special order only.

Durston Range of Extension Rollers - (Roulettes)

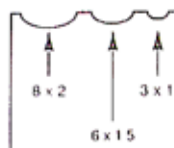
These rollers are made from the highest quality Swedish roll Steel with the forms being precision ground to a high finish. They are interchangeable with the standard extension rollers supplied with most machines.

Engraved Roulettes

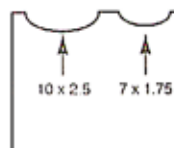
Fit to extension rolls for rolling designs onto precious metal wire.
200 patterns available.
Please ask for details



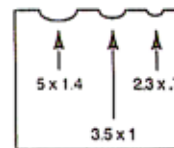
To Suit Mills
130, 150 &
Stacked



Ref: 16-439-011



Ref: 16-439-012



Ref: 16-439-013

To Suit
DRM 100



Ref: 16-439-001



Ref: 16-439-002



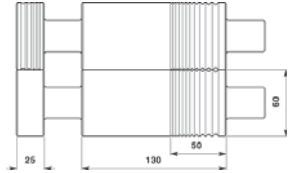
Ref: 16-439-003

Durston 130 Rolling Mills (DRM 130)

These are our best selling machines for the professional Jeweller, robustly built, fitted with self-lubricating bearings guaranteed for life and steel bearing housings. All drive gears are made from gear steel and are heat treated for maximum strength & long life. New - protective covers over the adjusting gears leaves the calibrated discs open for easy viewing while reducing the risk of catching clothing... or body parts! Also included is Durston's new, highly efficient gear box with a large reduction of 5:1. Very useful for the tougher applications or for when you need that extra help in rolling.

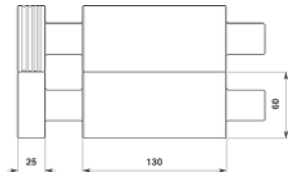
DRM C130

Combination Sheet and Wire with Extension Rolls and Reduction Gear



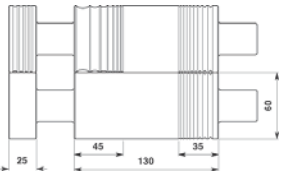
DRM F130

Flat Sheet with Extension Rolls and Reduction Gear



DRM R130

Combination Sheet, Wire and D Shapes with Extension Rolls and Reduction Gear



Durston's 5 : 1 Reduction Gears

Specifications

	DRM C130	DRM F130	DRM R130
Reference No.	16-445-000	16-447-000	16-428-000
Roll Size	130mm x 60mm	130mm x 60mm	130mm x 60mm
Sheet Capacity (thickness)	7mm	7mm	7mm
Width of Flat	80mm	130mm	50mm
'D' shapes on main roll	None *	None *	7 'D' shapes
Wire Capacity	9mm - 1mm	N/A	7mm - 1mm
No. of Wire grooves	11	N/A	9 + 7 'D' shapes
Gear Ratio	5 : 1	5 : 1	5 : 1
Extension Rollers	4 'D' Grooves 4, 3, 2, & 1.5mm	4 'D' Grooves 4, 3, 2, & 1.5mm	4 'D' Grooves 4, 3, 2, & 1.5mm
Dimensions in mm	375 x 220 x 370	375 x 220 x 370	375 x 220 x 370
Click for more detail	(Without Handle)	(Without Handle)	(Without Handle)
Net Weight	44.5kg	44.5kg	44.5kg



Covered for your protection, the calibrated dial makes it easy to read the roll gap measurement.

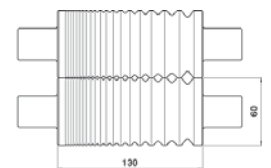


Specifications

	DRM W130	DRM C130 NR
Reference No.	16-446-000	16-445-500
Roll Size	130mm x 60mm	130mm x 60mm
Sheet Capacity (thickness)	-	7mm
Width of Flat	15mm	80mm
Wire Capacity	15mm - 1mm	9mm - 1mm
No. of Wire grooves	19	11
Gear Ratio	Direct drive	Direct drive
Extension Rollers	None	4 'D' Grooves 4, 3, 2, & 1.5mm
Dimensions in mm	290 x 220 x 370	330 x 220 x 370
	(Without Handle)	(Without Handle)
Net Weight	38kg	39.5kg

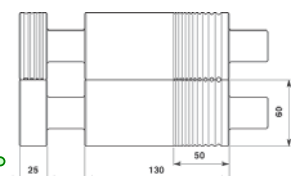
DRM W130

All Wire
No Extension Rolls
No Reduction Gear



DRM C130 NR

Combination Sheet and Wire with Extension Rolls
No Reduction Gear



Special Order

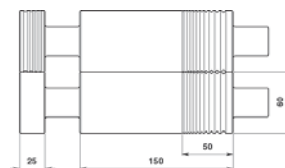
The Combination (C130) is also available without Extension Rolls and without reduction gear by special order only

Durston 150 Rolling Mills (DRM 150)

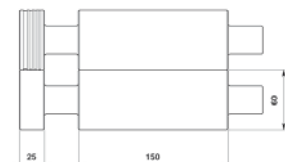
The DRM 150 was developed in response to jewellers requirements for a rolling mill that provided larger than usual roll width for Sheet while maintaining the ability to roll out Wire from standard ingot moulds. In addition, the extension rolls also needed to provide better than a single choice for 'D' shape wire which was all that some earlier model mills provided. Durston's DRM 150 has it all!



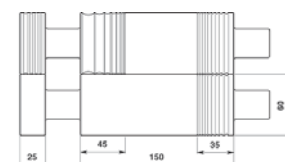
DRM C150
Combination
Sheet and Wire
with Extension Rolls
and Reduction Gear



DRM F150
Flat Sheet
with Extension Rolls
and Reduction Gear



DRM R150
Combination Sheet,
Wire and D Shapes
with Extension Rolls
and Reduction Gear



The DRM 150 incorporates the same features as the DRM 130 such as 5 : 1 reduction gear box,

a totally new casting to provide the maximum in strength and rigidity combined with the highest quality hardened and ground roll steel and safety features such as the covered calibration disc.



Specifications

	DRM C150	DRM F150	DRM R150
Reference	16-448-000	16-449-000	16-429-000
Roll Size	150mm x 60mm	150mm x 60mm	150mm x 60mm
Sheet Capacity (thickness)	7mm	7mm	7mm
Width of Flat	100mm	150mm	70mm
D' shapes on main roll	None	None	7 'D' Shapes
Wire Capacity	9mm - 1mm	N/A	7mm - 1mm
No. of Wire grooves shapes	11	N/A	9 + 7 'D'
Gear Ratio	5 : 1	5 : 1	5 : 1
Extension Rollers	4 'D' Grooves	4 'D' Grooves	4 'D' Grooves
Click to view	4,3,2,1.5mm	4,3,2,1.5mm	4,3,2,1.5mm
Dimensions in mm	400 x 220 x 370	400 x 220 x 370	400 x 220 x 370
Net Weight	48kg	48kg	48kg

Stands for Durston Hand Mills - All Durston stands are drilled and tapped with appropriate holes. Finished in attractive metallic silver coated paint. The stand should be secured to floor using appropriate bolts.

Mini Pedestal Stand

Ref: 16-427-001



Suits Durston Mini Mills
Dimensions:
Width 310mm
Depth 310mm
Height 920mm
Weight: 9kg

DRM Pedestal Stand

Ref: 16-440-001



Suits all DRM 100, DRM 130, DRM 150 D2-130 & D4-158 manual rolling mills.
Dimensions
Width 300mm
Depth 350mm
Height 920mm
Weight: 10kg

Cabinet Stand Ref: 16-430-001



Suits D2-130, D4-158 DRM 100, DRM 130 & DRM 150 manual rolling mills. Features include: excellent storage with two shelves and locking flush door. Sturdy 6mm plate steel construction.

Dimensions
Width 350mm
Depth 350mm
Height 900mm
Weight: 16kg

D2 - 120 Durston Stacked Mill

The D2 'Stacked Mill' is the first choice for busy workshops with limited space yet needing maximum sheet rolling width and a full range of wire reducing grooves from as much as 10mm initial material size down to 1mm square.

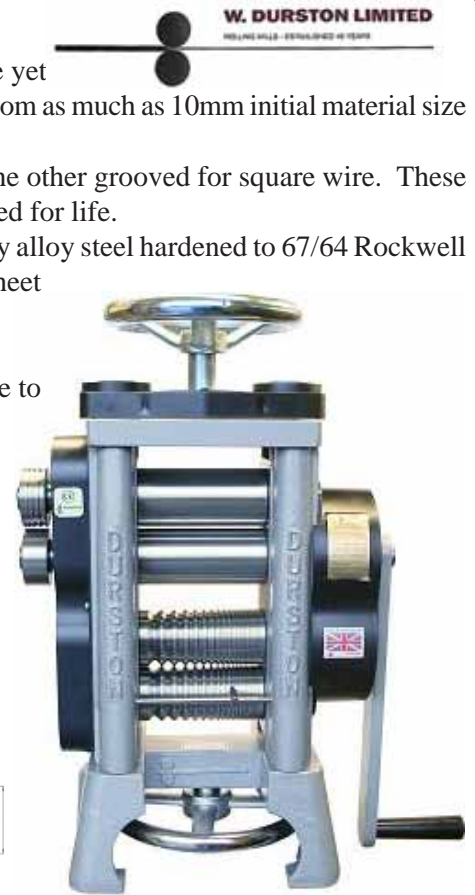
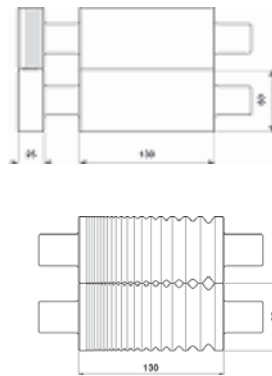
This machine has two sets of rolls, one for sheet (extended for D shapes) and the other grooved for square wire. These are set in high quality maintenance free bronze oilite bearings and are guaranteed for life.

As with the whole of the Durston range of mills the rolls are of the highest quality alloy steel hardened to 67/64 Rockwell C, ground to perfection. Excellent gearing ratio offering a reduction of 7:1 for sheet and 3.5:1 for wire provides for smooth manual operation.

Complete with safety covered roll gap calibration disc.

Extremely versatile and very rugged in construction this machine is very simple to use with full control over roll passes for both sheet and wire.

Specifications	D2 - 130
Reference	16-430-000
Roll Size	130mm x 60mm
Sheet Capacity (thickness)	7mm
Width of Flat	130mm
Wire Capacity	10mm - 1mm
No. of Wire Grooves	19
Gear Ratio Sheet	7 : 1
Gear Ratio Wire	3.5 : 1
Extension Rolls 'D' grooves	4, 3, 2 & 1.5mm
Dimensions in mm	380 x 200 x 580 (Excluding Handle)
Net Weight	70kg

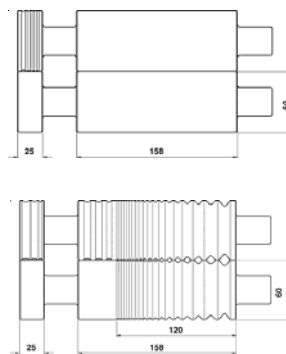


D4-158 Durston Stacked Mill

Ref: 16-435-000

The D4-158 has been developed in response to customer requests from several countries. These requests have shown a need for a mill to work with wider sheets up to 150mm and further need for more size variety in 'D' shapes. As with the D2 hand mill, there are 2 sets of rolls with the sheet rolls extended for 4 'D' shapes and the wire rolls extended for 3 'D' shapes. There are a further 3 'D' shapes on the main wire rolls.

Gear Ratio Sheet:	11:1 (opt 5:1)
Roll size:	158 x 60mm
Width of sheet:	152mm
Sheet Thickness:	6.0mm
Nett Weight:	72kg
Dimensions:	400 x 200 x 580mm
Gear Ratio Wire	5:1 (opt 2.5:1)
Grooves on W/Roll:	3 'D' 7, 6, 5mm
Wire size:	15-1mm
No. of wire grooves:	19
Extention Rollers (Top):	4 'D' Grooves 4, 3, 2, 1mm
Extention Rollers (Bot):	3 'D' Grooves 3.5, 2.75, 2.25mm



The same high quality specification on the bearings and roll steel as the rest of the Durston range and, of course, incorporating the high quality hardened helical gearing for long life and smooth operation.

An easy to read calibrated disc is provided for sheet rolls showing the roll gap in inches and millimetres in increments of 0.001 inches and 0.025mm. One turn on the centre hand wheel changes the roll gap by 0.05 inches or 1.250mm. Fine pitch threads and gear tooth form allows for easy roll adjustment.

A triple stage reduction is used for easy rolling and minimum effort. This feature is also useful for rapid reduction of rod and cast bar to the required size. Also available for the D4-158 is a second handle which reduces the gearing ratio by half, thus making the rolls turn quicker. The changeover time from one handle to another is approx 1min.

Use Cabinet Stand Ref: 16-430-001 or DRM Pedestal Stand Ref: 16-440-001 (See page 112 for details)



Cavallin Combination Rolling Mills

The Cavallin Combination Mills have been a popular choice for many Australian Jewellers over the last decade. These mills are now all supplied with Extension Rollers that have one "D" shape groove.

Specifications	LF 80 M	LF 100 M	LF 120 M
Reference	16-350-000	16-380-000	16-400-000
Roll Size in mm	80 x 44	100 x 52.5	120 x 65
Sheet Capacity (Thickness)	2.5mm	3.5mm	4.5mm
Width of Sheet	38mm	50mm	62mm
Wire Capacity in mm	3.5 - 1.0	4.5 - 1.0mm	6.0 - 1.0mm
Gear Ratio:	Direct Drive	Direct Drive	Direct Drive
Extension Rolls:	1 'D' shape 3.6 x 1.2mm	1 'D' shape 3.6 x 1.2mm	1 'D' shape 3.6 x 1.2mm
Dimensions in mm	280 x 180 x 340	310 x 210 x 380	340 x 220 x 410
Weight:	16Kg	23Kg	36Kg

Cavallin LF 120 M is also available with 4 : 1 reduction gear Ref: 16-405-000



Cavallin Pedestal Stands

All Cavallin hand rolling mills can be mounted on stands with a pre-drilled matching support plate. These stands are constructed from a single piece tapered steel column with fully welded heavy steel base and top plate. The stands have a hammer-tone paint finish and have four bolt holes in the base for securing to the floor.

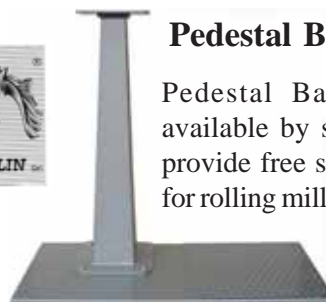
Suit Mill	Reference	Specifications
LF 80 M	16-350-001	Height: 820mm
LF 100 M	16-380-001	Base: 260 x 260mm
LF 120 M	16-400-001	Weight 13.5 kg

When ordering please specify the mill size to ensure the correct support plate is supplied.



Pedestal Base Plate

Pedestal Base Plates are available by special order to provide free standing support for rolling mill pedestals



Special Order

Cavallin Eco Power Mills



Power mills designed for both wire and sheet production in small workshops with regular low volume production requirements.

Special Order

Specifications	Eco 100	Eco 120
Reference	16-020-000	16-025-000
Roll Size in mm	100 x 52.5	120 x 65
Sheet Capacity	4mm x 40mm	5mm x 60mm
Wire Capacity	3.8 - 1mm	7mm - 1mm
Roll Speed	6.1m / min	5.1m / minute
Extension Roll	'D' 3.6 x 1.2mm	'D' 3.6 x 1.2mm
Power (motor)	750 watts	1100watts
Dimensions in mm	460 x 350 x 470 h	490 x 350 x 500 h
Weight	55Kg	82Kg

Cavallin Double Power Mills



Special Order

Specifications	Compact 100	Double 120
Reference	16-055-000	16-060-000
Roll Size:	52.5mm x 100mm	65 x 120mm
Sheet Capacity:	4mm x 75mm	5mm x 120mm
Wire Capacity	5.7mm - 1mm	7mm - 1mm
Roll Speed:	6.1m/min	5.1m/min
Extension Rolls	'D' 3.6 x 1.2mm	'D' 3.6 x 1.2mm
Power (motor)	750 watts	1100watts
Dimensions in mm	750 x 350 x 470 h	760 x 350 x 520 h
Weight:	85kg	115kg